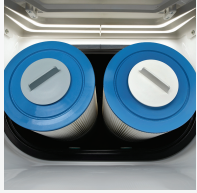


LIMELIGHT® COLLECTION



FreshWater® IQ
System Ready



Dual Action Filtration
SilentFlo Circulation



FiberCor®
High-Density Insulation



Color LCD Display

BEAM™



*Shown with Alpine White Shell
and Sable Cabinet*

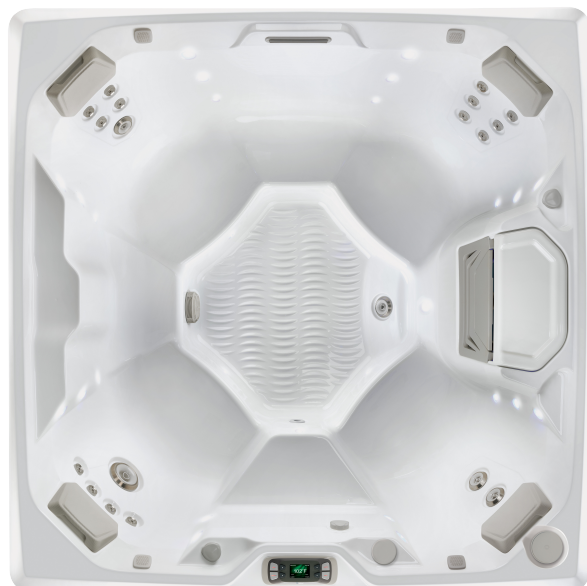
People	Seating	Jets	Voltage
4 Seats	Open	19 Jets	115 or 230 V

Size
6'8" x 6'8" x 33" | 203 cm x 203 cm x 84 cm

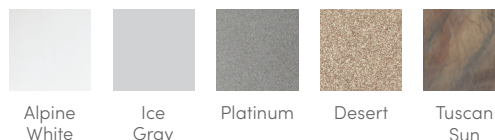
Water Care
FreshWater® Salt System Ready

LIMELIGHT® COLLECTION

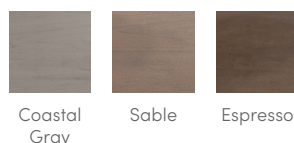
BEAM™



SHELL COLORS*

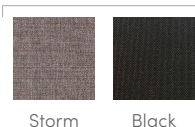


CABINET COLORS*



COVER COLORS

POLYESTER



LEGENDARY MESSAGE

19 Personalized-Control Jets

- 1 XL Dual Rotary jet
- 2 Standard Single Rotary jets
- 2 Standard Directional jets
- 14 Directional Precision® jets

EASY WATER CARE

Water Care System	FreshWater® Salt System Ready Smart Monitoring System Optional
Filtration System	Dual action, 100 sq. ft., top loading

LEADING ENERGY EFFICIENCY

Jet Pump	Beam I Wavemaster® 7000; Two-speed, 1.65 HP Continuous Duty, 3.5 HP Breakdown Torque Beam II Wavemaster® 9000; Two-speed, 2.5 HP Continuous Duty, 5.2 HP Breakdown Torque
Circulation Pump	SilentFlo 5000® for quiet, continuous filtration
Heater	Beam I Titanium No-Fault® 1,500 W / 115 V or 6000w / 230v Beam II Titanium No-Fault® 6,000 W / 230 V
Insulation	FiberCor® Insulation; Certified to California Energy Commission (CEC) and APSP 14 energy efficiency standards for portable spas
Cover	WeatherPro™ 4" Tapered Custom-Fit with Hinge Seal

SIZE

Dimensions 6'8" x 6'8" x 33" / 203 cm x 203 cm x 84 cm

CAPACITY

Seating Capacity 4 seats
Water Capacity 295 gallons / 1,115 liters
Weight 700 lbs. / 320 kg dry; 3,860 lbs. / 1,750 kg filled**

ADDITIONAL FEATURES

Smart Spa Technology	Hot Spring Spas App, Powered by the Connected Spa Kit
Water Feature	Vidro® backlit ribbon waterfall
Cover Lifters	CoverCradle®, CoverCradle II, Lift 'n Glide®, or UpRite®
Steps	Limelight Collection Step (Coastal Gray, Espresso, and Sable), Polymer Step (Ash)
Entertainment	Bluetooth® Wireless Sound System (Optional)
Control System	Beam I IQ 2020® with LCD control panel 115 V / 20 amp, 60 Hz (Includes G.F.C.I. protected power cord) or 230 V / 50 amp, 60 Hz Beam II IQ 2020® with LCD control panel 230 V / 50 amp, 60 Hz (Includes G.F.C.I. protected sub-panel)
Lighting System	Raio® multi-color interior points of light Exterior multi-color lighting with timer
Cooling System	CoolZone™ (Optional)

*Actual colors and products may vary from print representation. See dealer to verify.
**Includes water and 7 adults weighing 175 lbs. each.